



THE PALMER 28



THE PALMER 28 Model number:

2 beds • 2 baths • 1106 sq.ft. • 28' width • 44' depth

Our home building facilities invest in continuous product and process improvements. Plans, dimensions, features, materials, specifications and availability are subject to change without notice or obligation. Renderings and floor plans are representative likenesses of our homes and may differ from the actual homes. We invite you to tour a Home Center near you and inspect the highest value in quality housing available or call (817) 783-5200 to speak with a Home Consultant. Copyright 2017, CMH. All rights reserved.

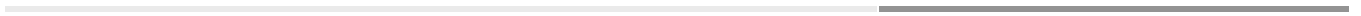
<https://www.claytonhomesburleson.com>

CLAYTON HOMES- BURLESON

3275 S BURLESON BLVD
BURLESON, TX 76028

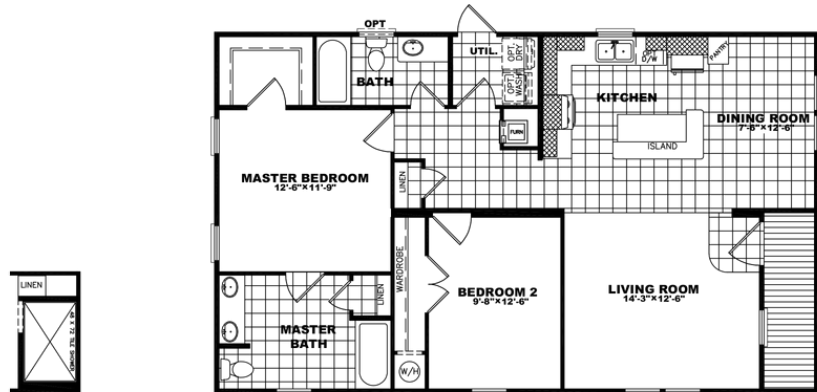
Monday - Thursday: 9am - 7pm
Friday: 9am - 6pm
Saturday: 9am - 5pm
Sunday: Closed

(817) 783-5200





THE PALMER 28



THE PALMER 28 Model number:

2 beds • 2 baths • 1106 sq.ft. • 28' width • 44' depth

Our home building facilities invest in continuous product and process improvements. Plans, dimensions, features, materials, specifications and availability are subject to change without notice or obligation. Renderings and floor plans are representative likenesses of our homes and may differ from the actual homes. We invite you to tour a Home Center near you and inspect the highest value in quality housing available or call (817) 783-5200 to speak with a Home Consultant. Copyright 2017, CMH. All rights reserved.

<https://www.claytonhomesburleson.com>

CLAYTON HOMES- BURLESON

3275 S BURLESON BLVD
BURLESON, TX 76028

Monday - Thursday: 9am - 7pm
Friday: 9am - 6pm
Saturday: 9am - 5pm
Sunday: Closed

(817) 783-5200